

Big D Farms
8735 Dunwoody PI
Suite 4667
Atlanta, GA 30350
Sales@BigDHempFarms.Com

Sample 726-011924-002

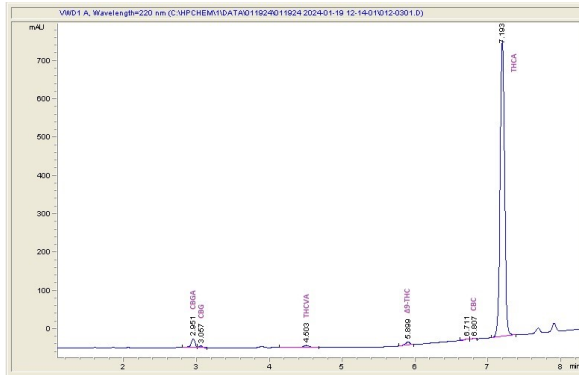
Ice Cream Runtz

Sample Submitted: 01-19-2024; Report Date: 01-24-2024

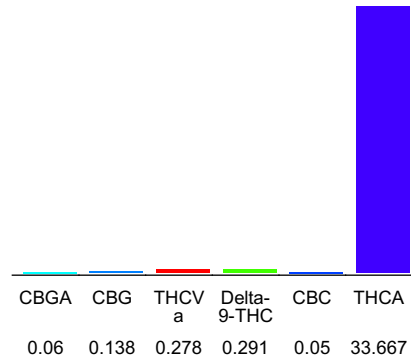
Ice Cream Runtz

Plant Material: Hemp Flower

Chromatogram



Cannabinoid Profile



Cannabinoid Profile by HPLC

0.29%
Delta-9-THC

0.00%
CBD

34.48%
Total Cannabinoids

| Cannabinoid | % wt | mg/g |
|-----------------------------|--------------|---------------|
| CBGA | 0.06 | 0.6 |
| CBG | 0.138 | 1.38 |
| THCVa | 0.278 | 2.78 |
| Delta-9-THC | 0.291 | 2.91 |
| CBC | 0.05 | 0.5 |
| THCA | 33.67 | 336.67 |
| Total Cannabinoids | 34.48 | 344.8 |
| Calculated Total THC | 30.52 | 300.47 |
| Calculated CBD Yield | 0.00 | 0.00 |

Calculated Total THC = Delta-9-THC + 0.877 * THCA

Calculated Maximum CBD Yield = CBD + 0.877 * CBDA

Marin Analytics, LLC

250 Bel Marin Keys Blvd, Suite D4 Novato, CA 94949



Mike

Clemmons
Lab Manager

833-321-TEST / info@marinanalytics.com

This sample has been tested by Marin Analytics, LLC using valid testing methodologies and a quality system. Values reported relate only to the sample tested. Marin Analytics, LLC makes no claims as to the efficacy, safety, or other risks associated with any detected or non-detected levels of any compounds reported herein. This Certificate shall not be reproduced except in full without the written approval of Marin Analytics, LLC. Copyright 2023 Marin Analytics, LLC All Rights Reserved.